

WMS

EL-150

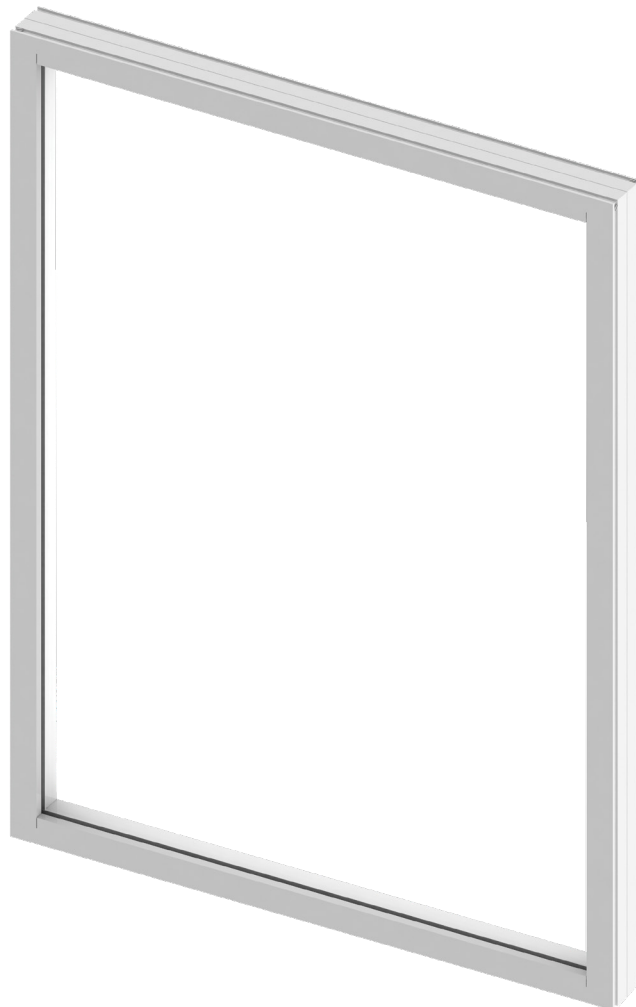
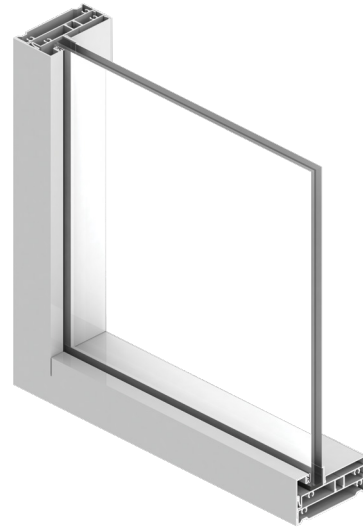
The EL-150 is a fixed window available in a variety of shapes to meet a wide range of applications. This window is used to bring light to places with difficult accessibility.

System Description

- Large missile impact rated
- 3" Frame depth
- Water infiltration: 12 psf
- Design load: +80/-80 psf large missile impact rated
- U-value:
 - 0.46 IGU (with 5/32" N70/38 Clear (#2) + 5/16" Air Spacer + 5/32" Clear + 0.075" PVB + 5/32" Clear Low-E (#6))
 - 1.01 LG (with 3/16" Clear + 0.09" PVB + 3/16" Clear)
- Insulating laminated glass
 - 1/8" + 5/16" Spacer + 1/8" + 0.09" Interlayer + 1/4"
 - 5/32" + 5/16" Spacer + 5/32" + 0.09" Interlayer + 5/32"
- Laminated glass
 - 1/8" + 0.09" Interlayer + 1/4"
 - 3/16" + 0.09" Interlayer + 3/16"
- Standard egress size: 35 5/8" x 64" and 25 5/8" x 88 1/2"

Features

- Flange frame for masonry, fin frame for wood construction or flush frame for concrete openings
- Architectural shapes available
- Minimum radius: 14"
- Saflex PVB, Kuraray PVB, Vanceva Storm and SentryGlas Plus interlayer options



COLORS AND FINISHES

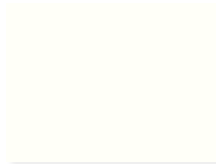
Standard Colors



Sunstorm Arcadia Silver
UC70123F



Bermuda Bronze
UC70123F



Bone White
UC43350



Clear Anodized

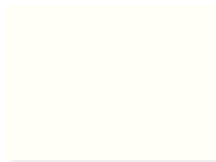
Hardware Finishes



Bronze



Silver



White

*Custom Colors Available

Service

Our engineers and designers provide customers with ongoing assistance and technical support to ensure the best solution for every project. We offer professional guidance to help customers pinpoint and balance their priorities. With this expert assistance, customers can plan and complete projects to achieve maximum benefits.

Engineering and Design

We offer the right solutions for the most complex projects and respond efficiently to the demands of architects and general contractors. We can deliver reliable, efficient and affordable products, due to a combination of advanced software technology and a leading team of expert engineers and designers, who specialize in aluminum, glass and window systems.

The Elite line provides customers a perfect combination of reliability, design and performance across a wide range of product types. Whether you are looking for noise reduction, temperature control, or protection from extreme weather, our line of products can provide the perfect performance solution, without sacrificing aesthetics.

ACCESSORIES

Design Elements

Every Elite window and door benefits from a combination of premium materials, cutting-edge production technology and the talent of an experienced team. All of these result in precise stylish designs that will endure over time.

EL-400 Roller



EL-100 & EL-200 Sweep Locks



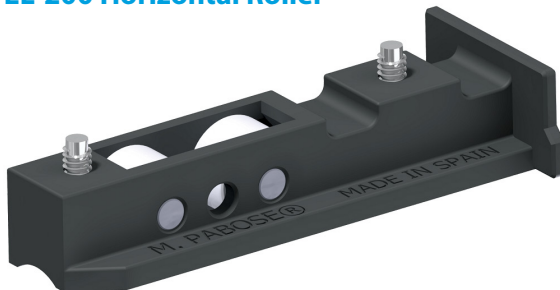
EL-100 & EL-200 Spring Latches



EL-400 Involute Handle



EL-200 Horizontal Roller



EL-300 Handle

