

# T225 Window & Door Series

Enhancing the beauty of American homes since 1947, our high quality thermally broken T225 windows and doors, with isobar construction and narrow 2 ¼" frame depth, have the unique ability to mull all the components to each other with the narrowest of sightlines to create seamless window and door walls of glass. Our T225 products allow for either **Modern Look** or **Steel Look** designs.

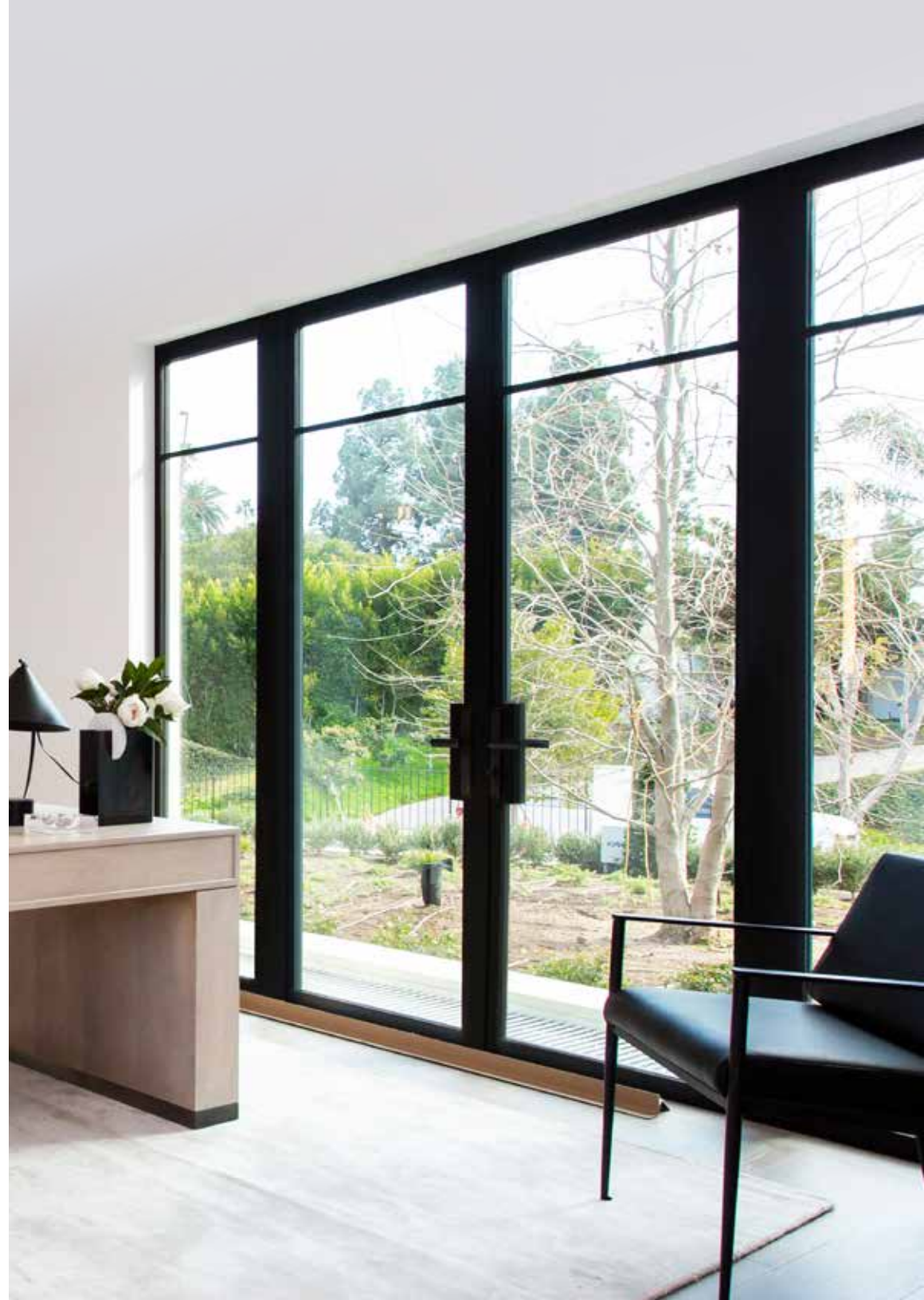
## Superior Performance

Our T225 windows and doors are expertly engineered for thermal performance to meet demand for improved energy efficiency. We offer a wide variety of sizes, high performance glass options and configurations, all of which are NFRC tested with low U-value ratings for reduced energy consumption.

## Shorter Lead-times, Efficiency & Value

Production lead-times for our T225 windows and doors are shorter than real steel lead-times, and we glaze our products to reduce handling and installation time. Like real steel products, our T225 products are completely customizable; plus there's a price advantage over real steel windows and doors. For value engineered jobs, we can effectively combine our T225 Thermal Aluminum products with our wide patented offering of Thermal Steel products, allowing for a truly transformative degree of design flexibility.

Modern Look





## T225

Thermal Aluminum  
Window & Door Series



## The True Steel Alternative Option

Streamlined and refined with detailed fit and finish, our Steel Look products are nearly indistinguishable from real steel products. They retain many of the features and aesthetics of the classic original steel products: our 13/16" beveled muntin SDL that simulates the look of original putty-glazed windows, glass stop on the exterior, flat stop and SDL on the interior - the same as a real steel window, and the addition of a lock box on swinging doors, synonymous with traditional steel doors.



## T225 Swing Doors

Our T225 **Modern Look** or **Steel Look** doors are constructed with the same materials used in our T225 Windows, making the transition from door to sidelite seamless with continuity of design.

# T225 Swing Doors

## Size

Single door panel sizes up to 3'6" wide, 9' tall or 3' wide, 10' tall.

## Hardware

3-point latch lock, throws shoot bolts top and bottom when the lever is raised, locks with key from the exterior and thumb turn interior.

## Weather Tightness

Double weather stripped for maximum air and water resistance.

## Configurations

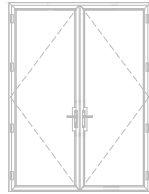
Inswing or outswing, single or pairs, with sidelite and transom options.



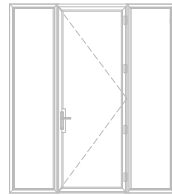
# T225 Swing Door Configuration Options



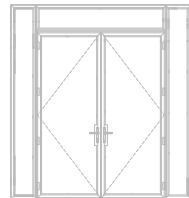
SINGLE



PAIR



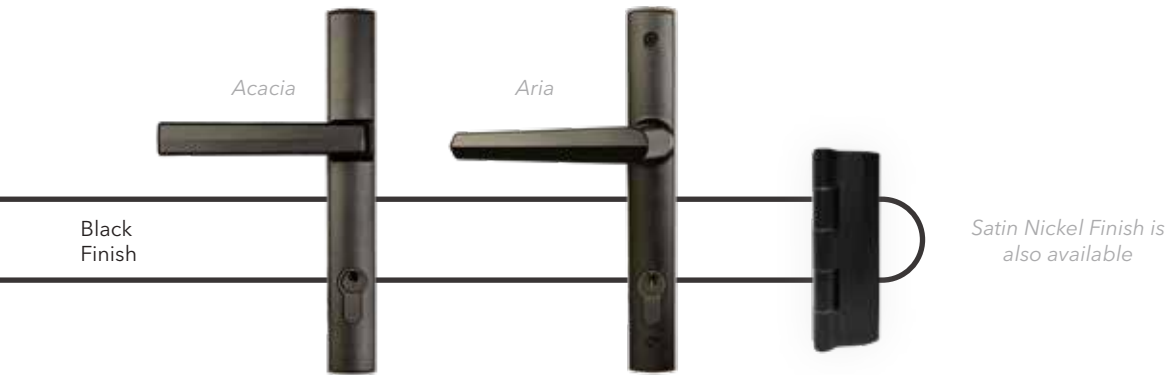
SINGLE  
MULLED SIDELITES



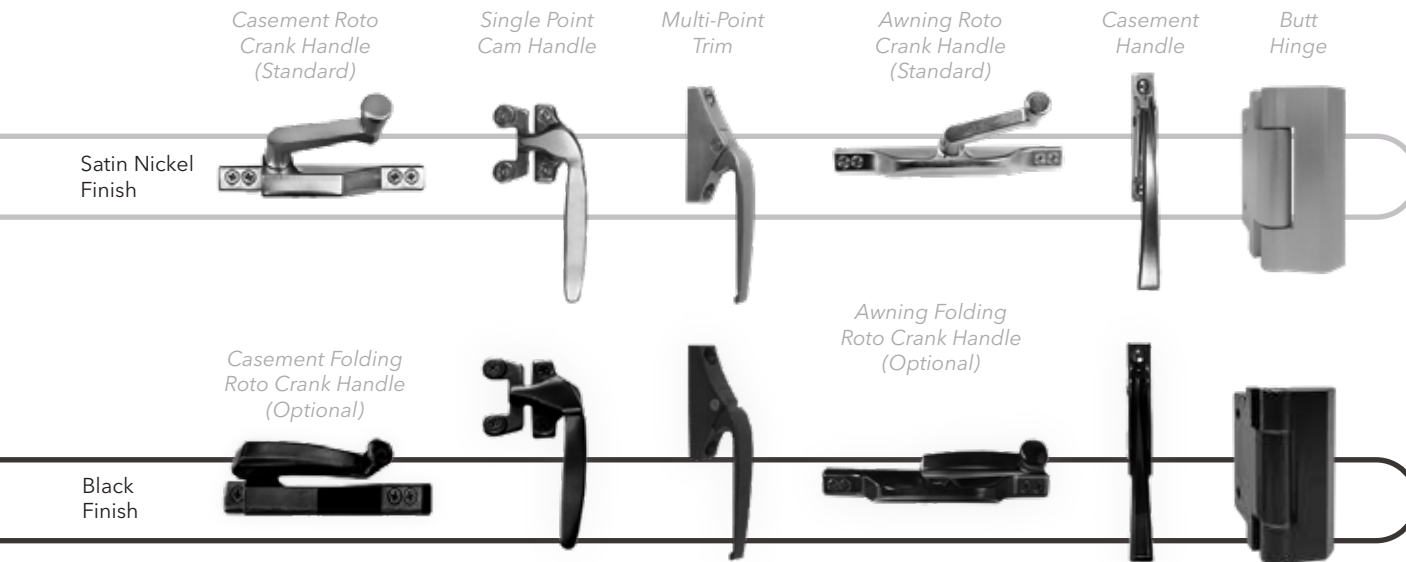
PAIR  
MULLED SIDELITES  
& TRANSOM



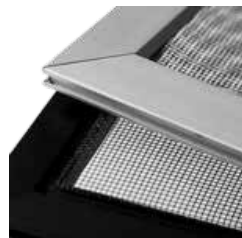
## T225 Door Hardware Options



## T225 Window Hardware Options



Concealed Friction Hinge  
Stainless Steel Finish  
(Max 15 sq ft)



Window Screen Options



Screen Clip



# Colors & Finishes

## Stock Finishes

Dark Bronze Anodized AB7  
Arcadia Custom Kynar Black Paint



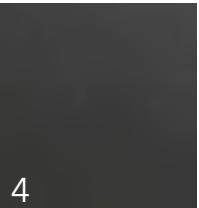
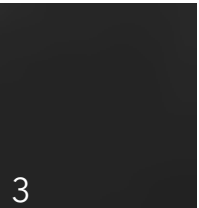
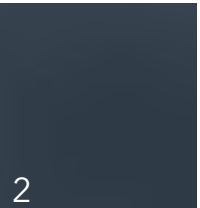
## Standard Anodized

Clear Anodized AC1



## Standard Paint Colors

- 1) Bone White
- 2) Charcoal Gray
- 3) Sift Espresso Smooth
- 4) Statuary Bronze
- 5) Quaker Bronze



## Premium Anodize and Custom Paint Colors

Are available upon request and require longer lead-times

