

# T225 Window & Door Series

Enhancing the beauty of American homes since 1947, our high quality thermally broken T225 windows and doors, with isobar construction and narrow 2 ¼" frame depth, have the unique ability to mull all the components to each other with the narrowest of sightlines to create seamless window and door walls of glass. Our T225 products allow for either **Modern Look** or **Steel Look** designs.

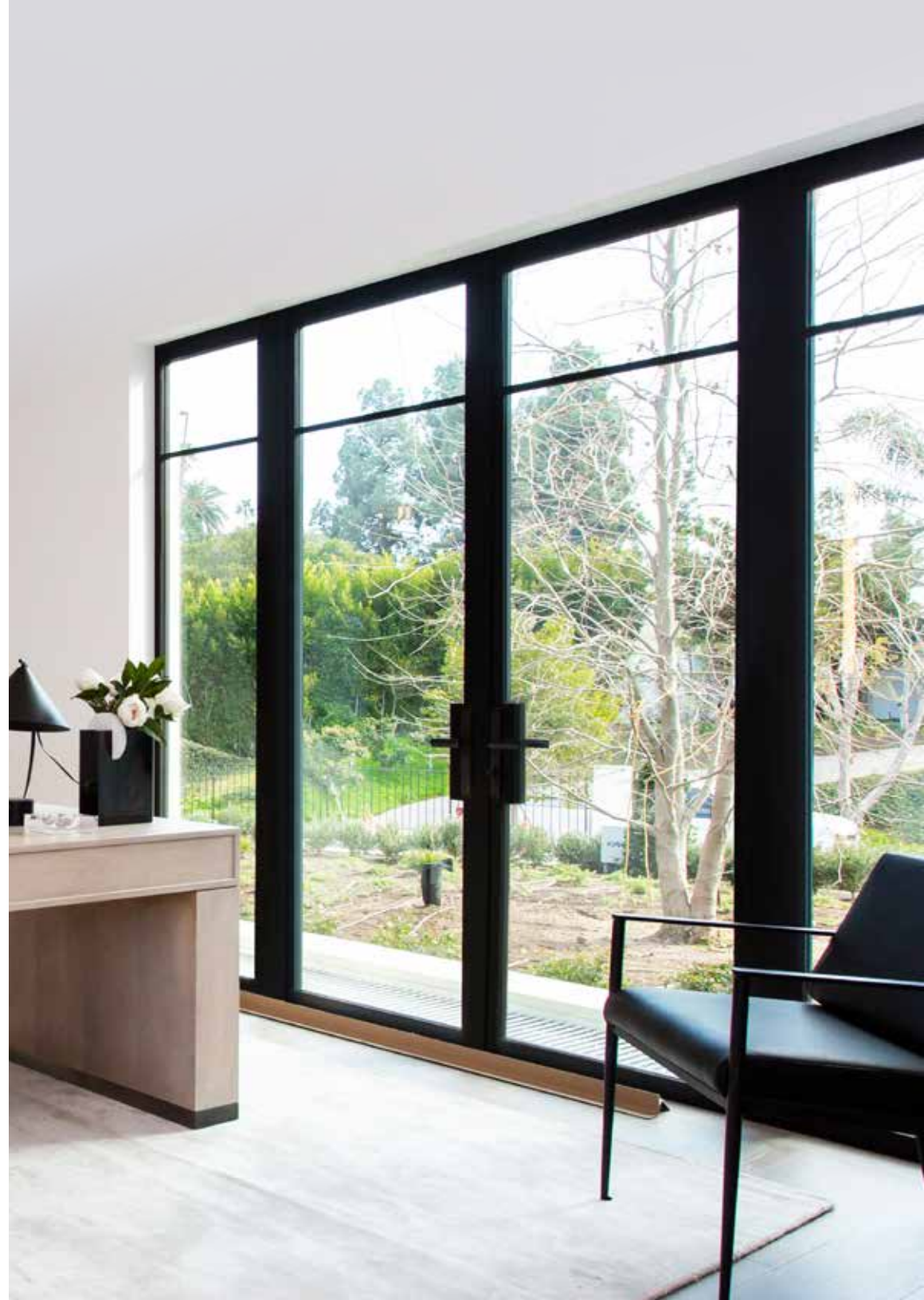
## Superior Performance

Our T225 windows and doors are expertly engineered for thermal performance to meet demand for improved energy efficiency. We offer a wide variety of sizes, high performance glass options and configurations, all of which are NFRC tested with low U-value ratings for reduced energy consumption.

## Shorter Lead-times, Efficiency & Value

Production lead-times for our T225 windows and doors are shorter than real steel lead-times, and we glaze our products to reduce handling and installation time. Like real steel products, our T225 products are completely customizable; plus there's a price advantage over real steel windows and doors. For value engineered jobs, we can effectively combine our T225 Thermal Aluminum products with our wide patented offering of Thermal Steel products, allowing for a truly transformative degree of design flexibility.

Modern Look





## T225

Thermal Aluminum  
Window & Door Series



## The True Steel Alternative Option

Streamlined and refined with detailed fit and finish, our Steel Look products are nearly indistinguishable from real steel products. They retain many of the features and aesthetics of the classic original steel products: our 13/16" beveled muntin SDL that simulates the look of original putty-glazed windows, glass stop on the exterior, flat stop and SDL on the interior - the same as a real steel window, and the addition of a lock box on swinging doors, synonymous with traditional steel doors.



## T225 Windows

Our T225 **Modern Look** or **Steel Look** windows are offered as fixed, casements, awnings and hopper configurations. Windows can be mullled to create long runs of fixed glazing which transition effortlessly into our T225 Doors.

**Frame Depth:** 2 ¼"  
**High Performance Glass:**  
1" dual-glazed, Low-E glass



## Fixed



### Size

Up to 5' wide, 10' tall

### Thermally Broken:

Frames designed for improved energy performance.

## Casement



### Size

Casement sash up to 3' wide, 6' tall

### Thermally Broken

Sashes and frames made with in-house Isobar technology for improved energy performance. Fixed units can be expanded simply by utilizing a wider Isobar to increase the glass thickness from 1" O.A. to 1 1/4" O.A.

### Operation / Configuration

Crank-out or push-out operation options; available as single, double, triple, or multiple operating sashes; matching transoms available.

### Hardware

Roto crank with butt hinges and multipoint casement lock.

## Awning/Hopper



### Size

Sash up to 6' wide, 3' tall

Available as single, double, triple or multiple operating sashes; matching transoms available. No project in windows, no inside glazed option.

### Thermally Broken

Sashes and frames for improved energy performance.

### Hardware

Awning: roto operated on butt hinges with a dual arm operator and multipoint locks, or as a push out on 4 bar friction hinges and locking cam handles. Hopper: Pull in operation with 4 bar friction hinges and inswing cam handles; for units mounted above doors or clearstory windows up high an option with ring cam handles or snap locks operated with a pole.



# Colors & Finishes

## Stock Finishes

Dark Bronze Anodized AB7  
Arcadia Custom Kynar Black Paint



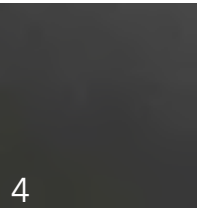
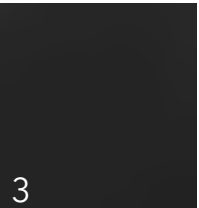
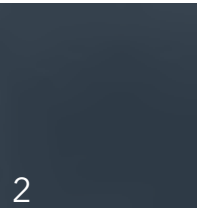
## Standard Anodized

Clear Anodized AC1



## Standard Paint Colors

- 1) Bone White
- 2) Charcoal Gray
- 3) Sift Espresso Smooth
- 4) Statuary Bronze
- 5) Quaker Bronze



## Premium Anodize and Custom Paint Colors

Are available upon request and require longer lead-times

